

FIGURE 1

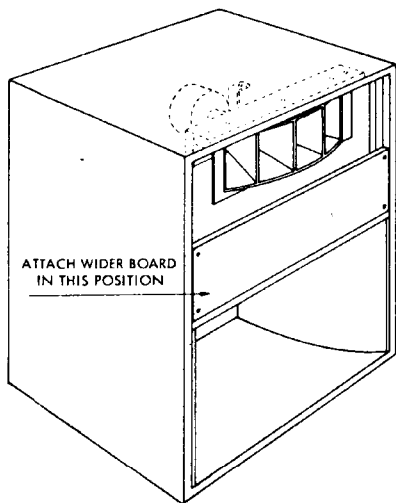


FIGURE 2

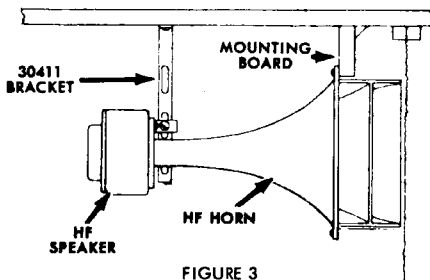


FIGURE 3

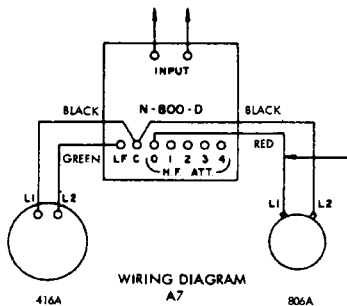
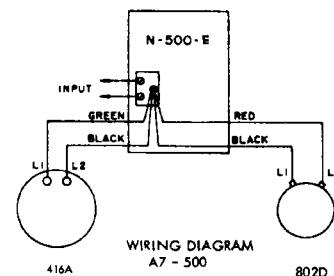


FIGURE 4

NOTE:
This lead connected to "0" on the network provides no attenuation of high frequencies; connected to "4" it provides a maximum of high frequency attenuation.



A7, A7-500 SPEAKER SYSTEM

ASSEMBLY INSTRUCTIONS

HF HORN MOUNTED ON EXTERIOR (See Figure 1.)

1. With the 825 horn face down, remove the screws holding the rear panel in place, then remove the panel.
2. Mount the LF speaker using the four 1/4 x 20 x 1 1/4 filister head screws furnished.
3. Mount the network in the 825 horn (or on top of the horn if preferred) with the four 6 x 1/2 wood screws furnished. If the N-500E network is used, it should be mounted on the inside of the removable rear panel with the control shaft extending through the opening provided.
4. Attach the HF horn mounting board to the top of the cabinet with the four 10 x 1 1/2 round head wood screws furnished.
5. Place the 30411 bracket on the HF horn, then attach the HF speaker and gasket to the flange of the HF horn. Do not tighten the screws.
6. Mount the HF horn to the mounting board with the three 1/4 x 20 x 1 1/4 filister head screws furnished, and mount the 30411 bracket to the cabinet with a 10 x 3/4 wood screw. Do not tighten the screws.
7. Adjust the desired angle of the HF horn and tighten all screws.
8. Make connections from the network to the speakers as indicated in the wiring diagrams (Figure 4). The wiring from the HF horn may be brought into the horn through the hole provided in the back of the rear panel.
9. Connect the output of the amplifier to the input of the network using the opening provided at the rear of the cabinet.
10. Replace the rear panel of the 825 horn and secure with twelve 8 x 1 1/4 filister head wood screws.

HF HORN MOUNTED ON INTERIOR

To mount the HF horn and speaker inside the 825 horn, remove the two port boards from the front of the cabinet and attach the mounting board and 30411 bracket as indicated in steps 4 through 7 above, removing enough fiberglass to permit mounting directly to the plywood. When installation is completed, replace the wider board as indicated in Figure 2.

ITEM	QTY	TYPE (A7)	TYPE (A7-500)
LF HORN	1	825	825
HF HORN	1	811B	511B
LF SPEAKER	1	416A	416A
HF SPEAKER	1	806A	802D
NETWORK	1	N800D	N500E
#16 STRANDED WIRE	6 FT	RED	(PART
#16 STRANDED WIRE	9 FT	BLACK	OF
#16 STRANDED WIRE	3 FT	GREEN	NETWORK)
INSTRUCTION SHEET	1	30562	30562



A Division of **GFV** Ling Altec, Inc.
©Altec Lansing

1515 S. Manchester Ave., Anaheim, Calif.
New York

30562-5 Price \$.10

Litho in USA 7/66