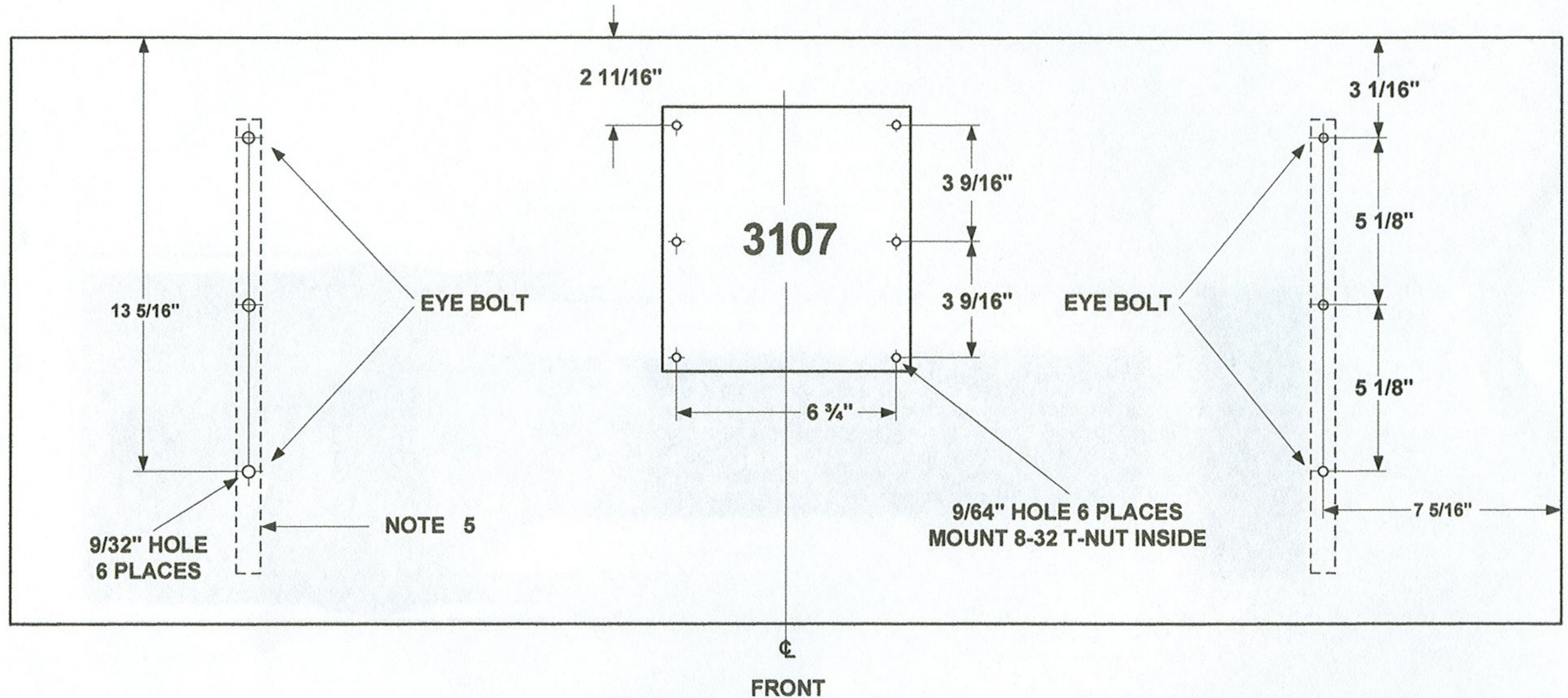


**CABINET BOTTOM VIEW  
HOLE LAYOUT FOR 3107  
AND INTERNAL BRACKETS**



**NOTE 5**

THERE ARE TWO INTERNAL STEEL L-BRACKETS THAT SUPPORT THE WEIGHT OF THE BAFFLE AND MOUNTED COMPONENTS WHEN THE CABINET IS INVERTED AND HUNG FROM CEILING CABLES.

AT EACH OF THE 4 CORNER HOLES THERE ARE EYE BOLTS MOUNTED. THE EYE BOLTS ARE GALVANIZED FORGED EYE BOLTS THAT ARE SHOULDERED STYLE. SIZE IS  $\frac{1}{4}"$  - 20 x 2" LONG.